

Manitoulin-Sudbury DSSAB - Housing Services for the month of APRIL 2009

	ADULT BUILDING		DELETIONS		FAMILY UNITS		DELETIONS		APPLICANT RANKING				Vacant Units	INCOME CATEGORY	
	Previous Applications on File	New Applicants	Housed	Cancel	Previous Applications on File	New Applicants	Housed	Cancel	REMAINING CURRENT APPLICANTS	SUPPORTIVE	Special Priority	Overhoused / Transfer Requests		RGI	Market
SUDBURY NORTH															
Chapleau	11	0	1	0	4	1	2	0	13	0	0	1	1	10	3
SUDBURY EAST															
Noëlville	12	2	0	0	2	0	0	0	16	0	0	0	0	12	4
St. Charles	5	1	1	0	1	0	0	0	6	0	0	1	1	6	0
Warren	9	0	0	0	4	1	0	0	14	0	0	2	1	14	0
LACLOCHE															
Espanola	66	5	0	1	33	5	0	1	107	3	0	9	1	102	5
Massey	23	2	0	0	3	0	0	0	28	0	0	3	0	23	5
Webbwood	22	2	0	0	0	0	0	0	24	1	0	2	0	21	3
MANITOULIN ISLAND															
Gore Bay	13	4	1	1	2	0	0	0	17	0	0	2	1	14	3
Little Current	22	1	1	1	2	2	0	0	25	0	0	1	1	20	5
Manitowaning	9	0	1	0	0	0	0	0	8	0	0	0	1	8	0
Mindemoya	19	1	1	1	1	0	0	0	19	0	0	1	1	15	4
TOTAL	211	18	6	4	52	9	2	1	277	4	0	22	8	245	32

Applicants can apply for more than one location and are counted as per geographical location

Figures are not included from the Non - Profit Housing in Chapleau, Espanola, Gore Bay and Little Current

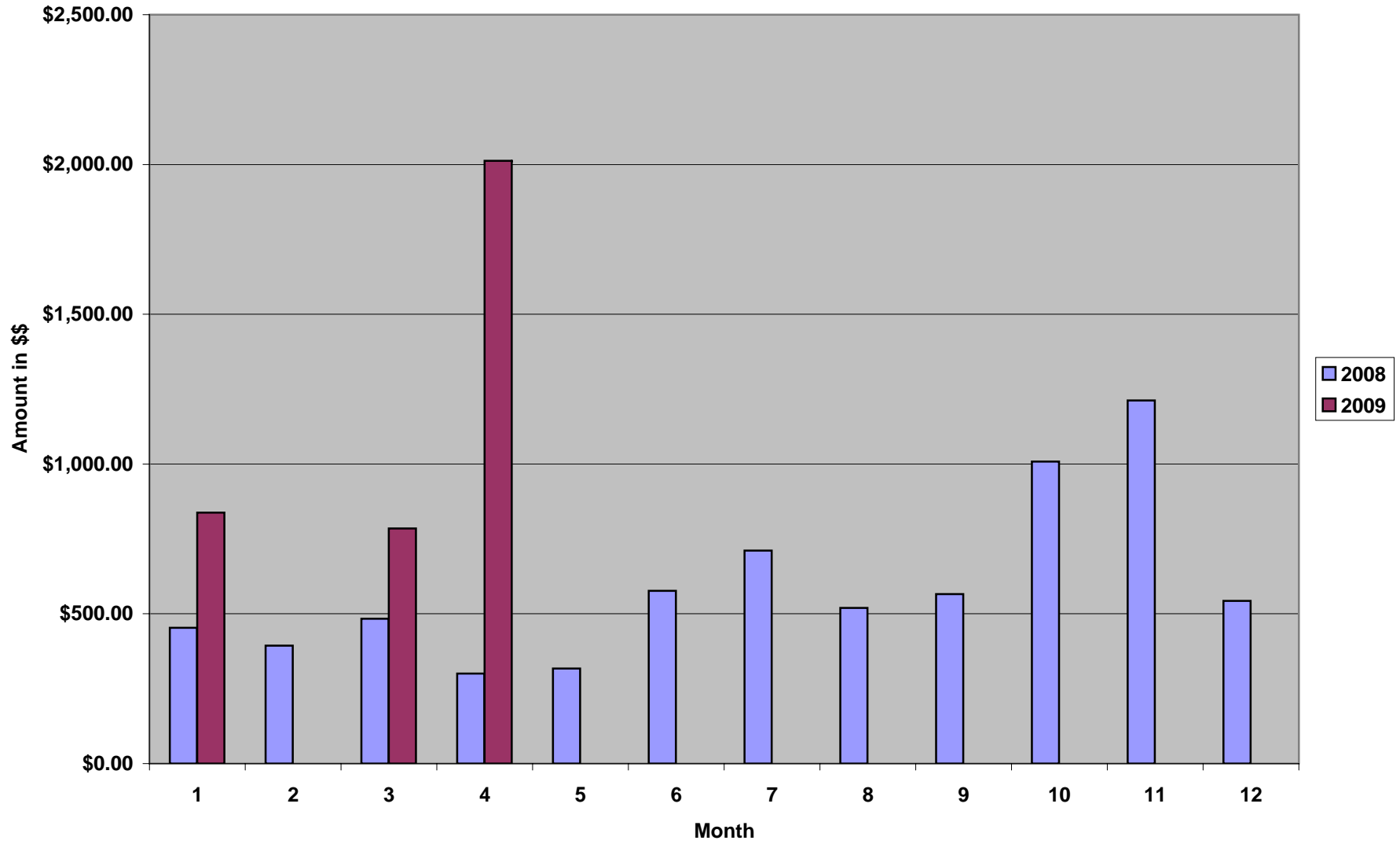
All Family Housing applicants are included in this report regardless of whether or not we have family housing units in their area of choice

REASONS FOR MOVEOUTS 2009

REASONS FOR MOVEOUTS	JAN	FEB	MAR	APR	MAY	JUN	JUL	AUG	SEP	OCT	NOV	DEC	TOTAL TO DATE
ACCOMMODATION / HOUSEHOLD SIZE			2	1									3
BOUGHT HOUSE													0
DECEASED													0
DOMESTIC													0
EMPLOYMENT/EDUCATION													0
EVICTION	1												1
HEALTH - Long term care			1	1									2
LEFT MUNICIPALITY													0
LEFT WITHOUT NOTICE / Abandoned													0
MISREPRESENTATION													0
MOVED TO OTHER SUBSIDIZED HOUSING													0
NEW PROPERTY													0
NONE GIVEN			2										2
NOTICE TO VACATE													0
OTHER				1									1
PRIVATE RENTAL													0
RENT CHANGE													0
SIGNED LEASE BUT DID NOT MOVE IN													0
TRANSFER	1			1									2
TOTAL	2	0	5	4	0	0	0	0	0	0	0	0	11

Figures are not included from the Non Profit Housing units that are not directly managed by MSDSSAB

Annual Arrears Comparison



Manitoulin-Sudbury DSSAB
Housing Services Dept.
Annual Arrears Comparison 2008/2009

Month	2008 Rent Revenues	2008 Arrears	2009 Rent Revenues	2009 Arrears	% of Revenue
January	\$84,034.65	\$453.50	\$84,694.00	\$838.00	0.99%
February	\$85,161.35	\$394.00	\$85,924.00	\$0.00	0.00%
March	\$85,059.42	\$483.40	\$86,785.00	\$785.05	0.90%
April	\$86,301.00	\$300.40	\$86,150.00	\$2,012.00	2.34%
May	\$85,806.00	\$317.60			#DIV/0!
June	\$84,127.00	\$577.00			#DIV/0!
July	\$83,827.00	\$711.00			#DIV/0!
August	\$84,209.00	\$520.00			#DIV/0!
September	\$84,337.60	\$566.00			#DIV/0!
October	\$85,736.00	\$1,008.00			#DIV/0!
November	\$86,193.00	\$1,212.00			#DIV/0!
December	\$84,252.00	\$543.00			#DIV/0!
Totals:	\$1,019,044.02	\$7,085.90	\$343,553.00	\$3,635.05	1.06%