



Statistics Report for December 2017

Employment Subsidy Program

In an attempt to increase our client's average earnings and clients exiting to employment, the employment staff will continue to promote our employment program to prospective employers. The Enhanced Job Placement Program (EJP) is subsidized program that assists our disadvantaged participants in obtaining and maintaining employment. We would like to continue to remind the Municipalities within the Manitouslin-Sudbury DSB area that they may want to consider utilizing this program when they consider hiring additional staff.

December 2017: New and Active Employment Subsidy Placements

Employment Subsidy Placements	Total
Number of <u>NEW</u> Employment Subsidy Placements	0
Number of <u>ACTIVE</u> Employment Subsidy Placements	0
<u>TOTAL</u> Employment Subsidy Placements – Year to Date	10

Employment Ontario

The Manitoulin-Sudbury DSB began offering Employment Ontario Services effective August 1st, 2010. The new employment service model will provide clients with a single, enhanced point of access to services that are customer-focused, flexible and responsible to local community needs. Employment Ontario offers help to those who are unemployed get training, skills and experience to achieve their goals. The program connects people looking for work with employers looking for workers.

Employment Ontario Caseload	December 2017	YTD –from April 1, 2017	Provincial Target
Number of new participants	1	128	N/A
Number of people using the Resource Centre	142	2000	N/A
Intake in Assisted Services	1	14	100
Employed/Career Path	56%	82%	69%
Training/Education	19%	125%	15%
Customer Satisfaction	83%	92%	90%

Training Available To OW Participants

As a result of the provincial decision to end the enhanced community placement funding the Ontario Works department has redirected its energy from Community Placements to providing in house training to participants. We currently offer the following training to participants:

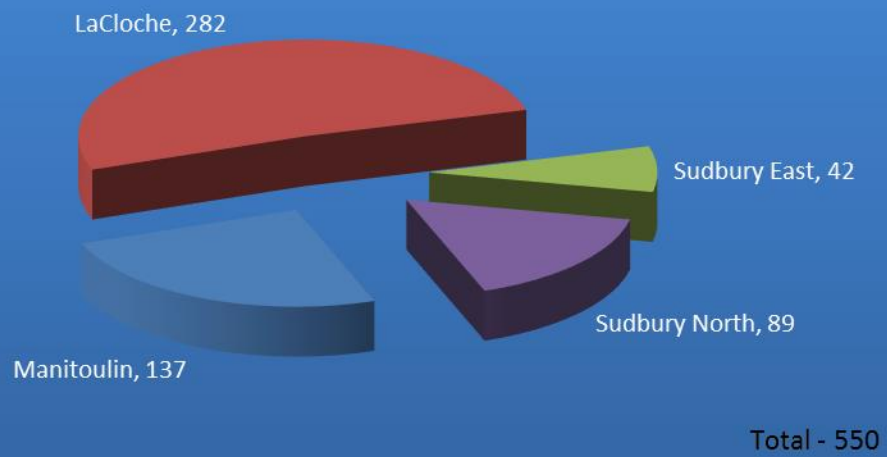
- **Emergency First Aid**
- **First Aid / CPR**
- **WHMIS**
- **Chainsaw Certification**
- **Smart Serve**
- **True Colours**
- **Boater Safety**
- **Team Excellence**
- **Service Excellence**
- **Communication Excellence**
- **Overcoming Negativity**
- **Ethical Excellence**
- **Automated External Defibrillation Course**
- **The Poverty Game**
- **Follow Your True Colours to the Work you Love**
- **Safe Food Handling**
- **Traffic Protection Training**

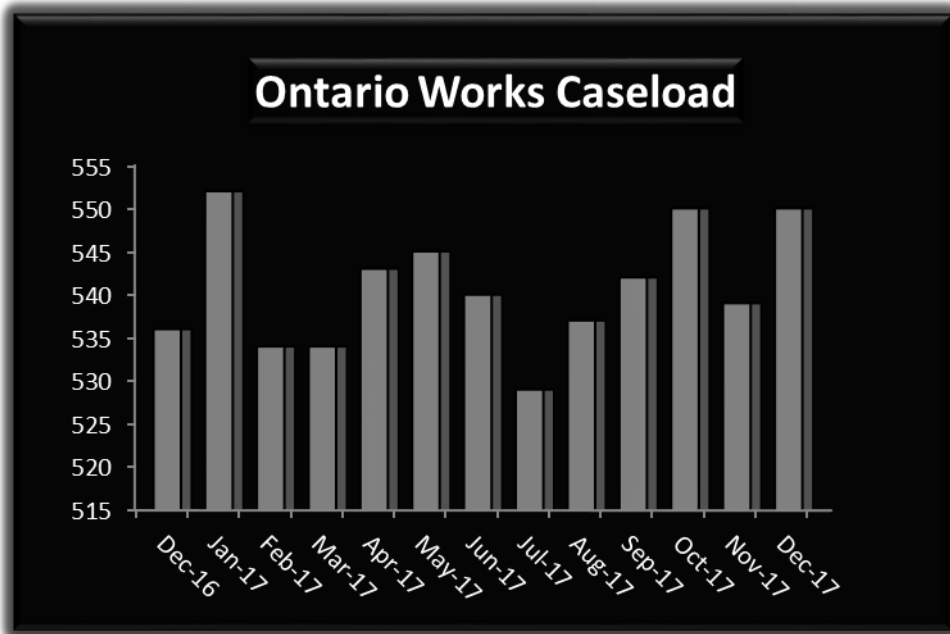
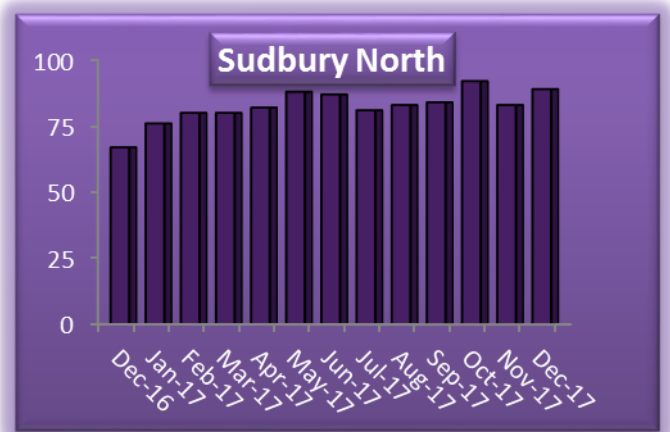
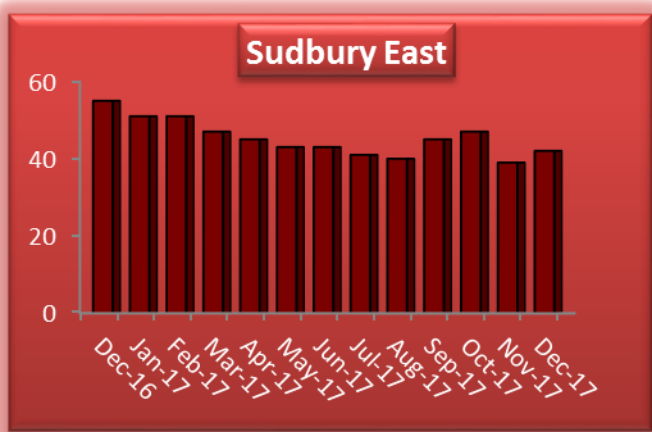
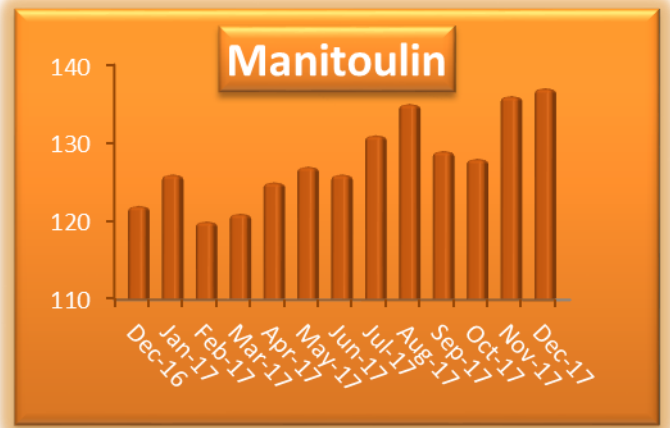
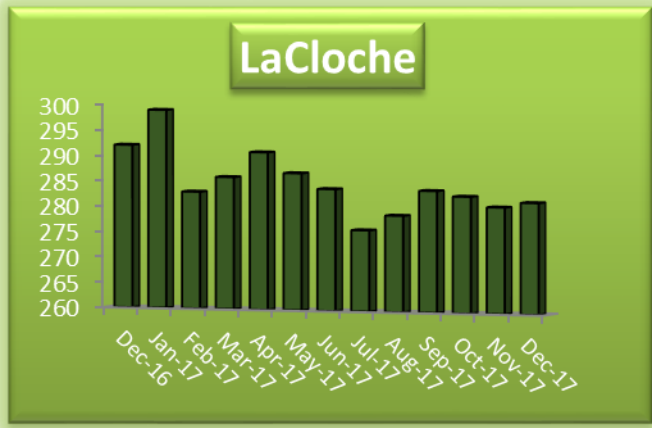
These sessions are normally scheduled on a monthly basis and there should be a **session near your municipality each month**. This training has been made available, free of charge, to member municipalities who have in turn provided the DSB with a free meeting place for the sessions.

OW Caseload Statistics for December 2017
Active Cases by Municipality

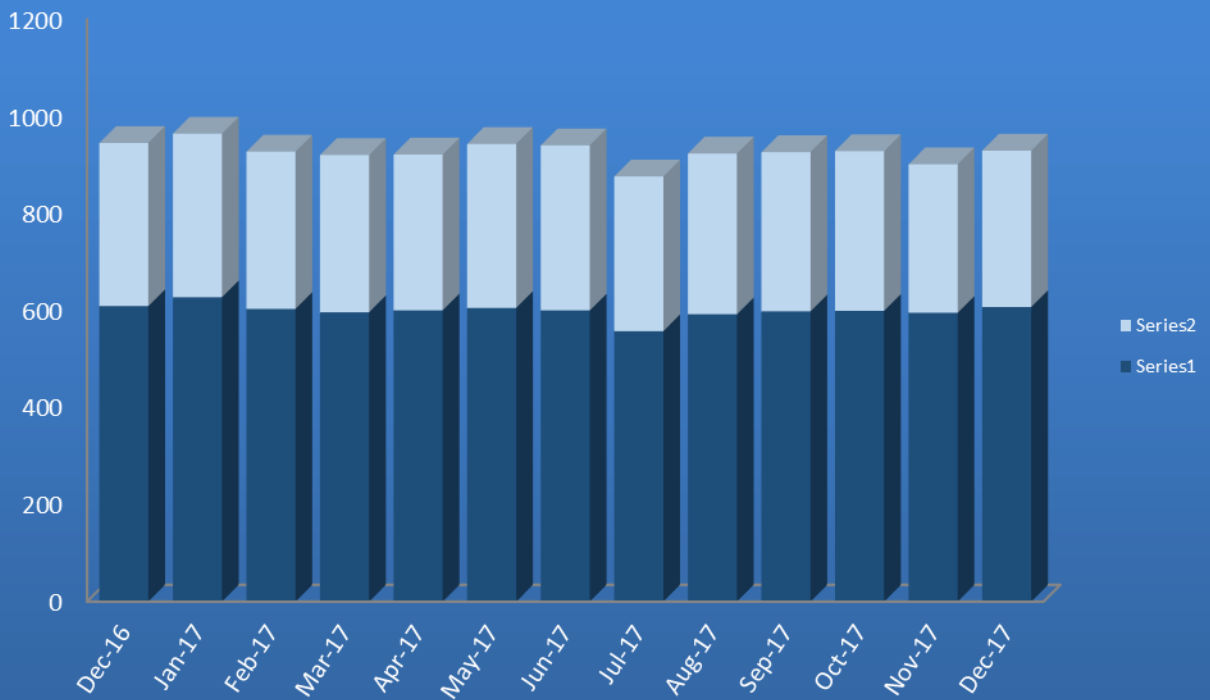


Ontario Works Caseload Statistics for December 2017
Active Cases by Region

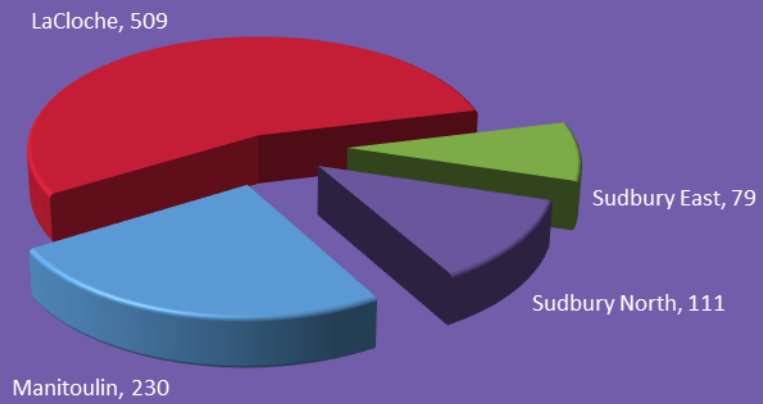




Total Number of Adults and Children on Ontario Works



**Number of Adults and Children on Ontario Works
December 2017
Active Case by Region**



Total # of Adults and Children 929