

***STEERING COMMITTEE
for the
SUDBURY-MANITOULIN DISTRICT
SOCIAL SERVICES ADMINISTRATION BOARD***

Monday September 21, 1998

Mayor Dorothy Wilson
Town of Espanola
100 Tudhope Street, Suite 2
Espanola, ON P3E 1S6

Dear Mayor Wilson:

As you know, a Steering Committee has been meeting over the past three months to begin the process of establishing a District Social Services Administration Board for the combined Districts of Manitoulin and Sudbury, excluding the Regional Municipality of Sudbury.

One of the responsibilities of the Steering Committee has been to develop a representation model for the member communities of the new Board. The Steering Committee retained the services of The Randolph Group to assist with the task of developing the model.

At its meeting on Thursday September 17, 1998, the Steering Committee passed the following resolution:

“That the representation model presented by the consultants based on population be approved”.

The representation model that was presented by The Randolph Group and approved by the Steering Committee proposes fourteen (14) Board members representing the municipalities and unorganized geographical areas of the Sudbury and Manitoulin Districts. One representative is to be appointed by the Province to bring the total number of Board members to fifteen. Attached in Appendix A is a detailed breakdown of the proposed representation model.

On behalf of the Steering Committee, I request that you bring before your Council the proposed representation model for approval. Attached in Appendix B is a sample resolution that may be used. Further, I request that you and your Council provide your response to the resolution by Friday October 23, 1998.

Members of the Steering Committee and staff from the Ministry of Community and Social Services are available to attend your Council meeting to make a presentation or answer questions regarding the proposed representation model. Their names and telephone numbers are included in Appendix C.

F 0 6

.../2

Page 2

Letter to Member Municipalities
Sudbury-Manitoulin DSSAB

The Steering Committee's recommendation regarding Board representation must be approved by a double majority of the Councils who are member communities of the Sudbury-Manitoulin District Social Services Administration Board. Subject to the approval of the member communities, the next phase will involve the appointment and/or election of the Board members. This phase will require that each of the township Councils that share representatives meet for the purpose of nominating and electing their representatives. While further information will be provided at a later date, those townships that are prepared to proceed with this phase immediately are asked to contact Frank Malvaso at the Ministry of Community and Social Services for further clarification. The second phase will be completed by the end of November 1998.

Once your Council has had an opportunity to address the resolution please forward your response by Friday October 23, 1998 to:

Frank Malvaso
Program Supervisor
Ministry of Community and Social Services
199 Larch Street, Suite 603
SUDBURY, ON
P3E 5P9

Telephone: 564-4571, extension 224

Facsimile: 564-3153

Your Council's consideration of the proposed representation model is sincerely appreciated by the Steering Committee.

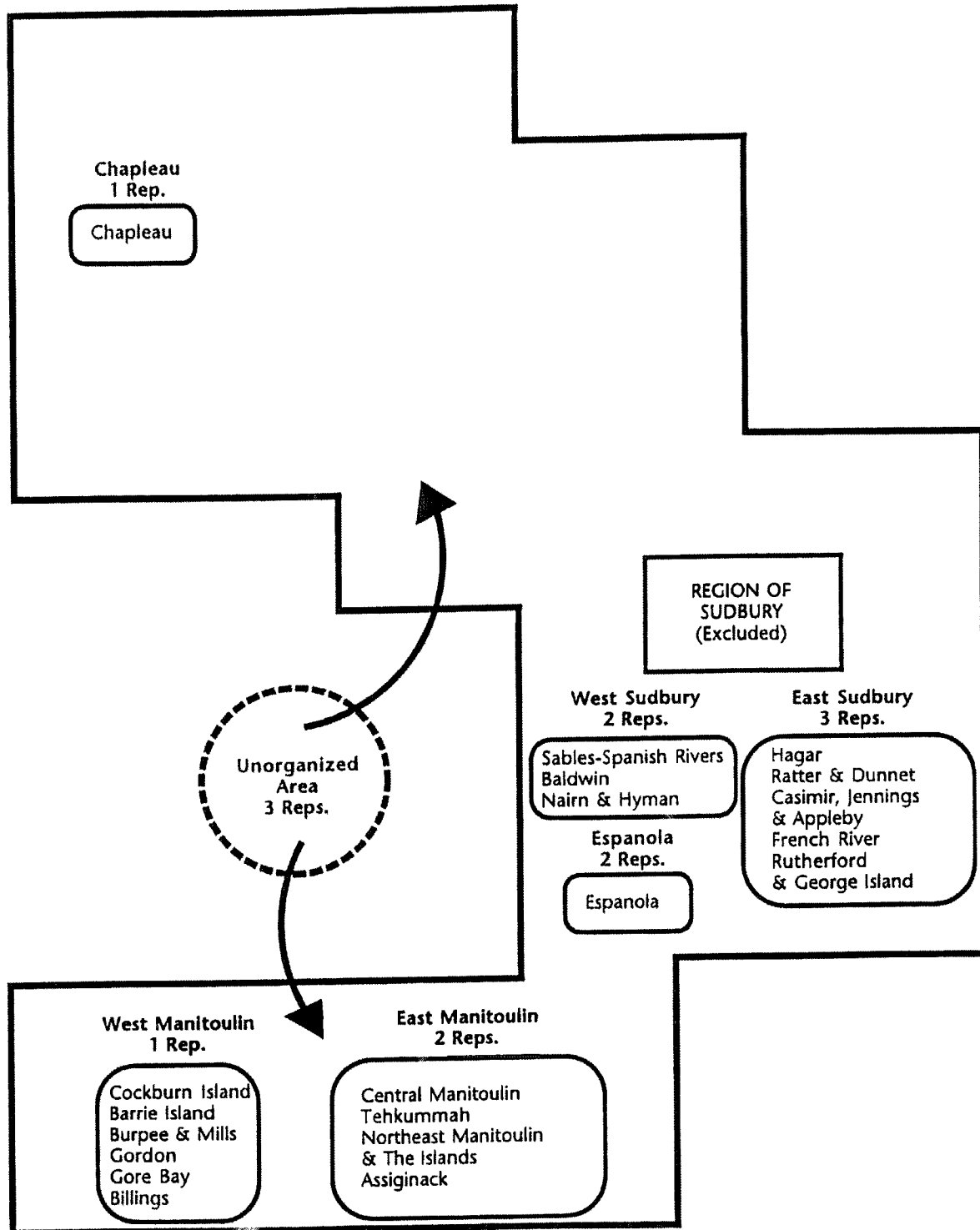
Yours truly



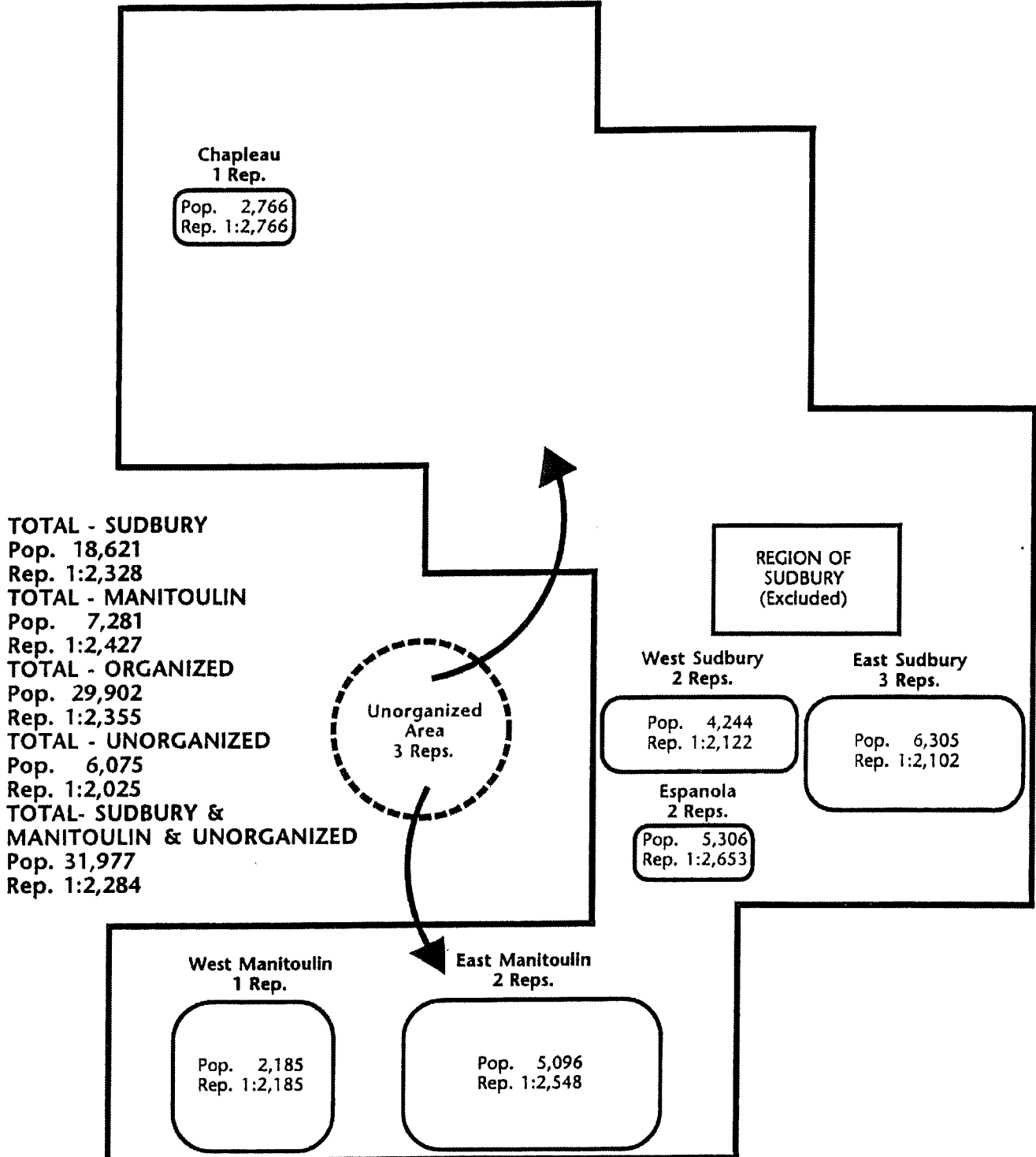
Frank Gillis, Chair
Steering Committee
Sudbury-Manitoulin District
Social Services Administration Board

APPENDIX A

SUDBURY-MANITOULIN DISTRICT SOCIAL SERVICES ADMINISTRATION BOARD - GOVERNANCE PLAN



SUDBURY-MANITOULIN DISTRICT SOCIAL SERVICES ADMINISTRATION BOARD - GOVERNANCE PLAN



**SUDBURY-MANITOULIN DISTRICT SOCIAL SERVICES
ADMINISTRATION BOARD
GOVERNANCE PLAN
PROPOSED REPRESENTATION**

SUDBURY DISTRICT	POP.	REPS.	REP./POP.
ESPANOLA AREA			
Espanola	5,306	2	2653
WEST OF REGION			
Sables-Spanish Rivers	3,245		
Baldwin	596		
Naim & Hyman	403		
TOTAL WEST OF REGION	4,244	2	2122
EAST OF REGION			
Hagar	878		
Ratter & Dunnet	1,248		
Casimir, Jennings & Appleby	1,144		
French River	2,669		
Rutherford & George Island	366		
TOTAL EAST OF REGION	6,305	3	2102
CHAPLEAU AREA			
Chapleau	2,766	1	2766
TOTAL SUDBURY ORGANIZED	18,621	8	2328
MANITOULIN DISTRICT			
WEST MANITOULIN			
Cockburn Island	2		
Barrie Island	59		
Burpee & Mills	315		
Gordon	449		
Gore Bay	857		
Billings	503		
TOTAL WEST MANITOULIN	2,185	1	2185
EAST MANITOULIN			
Central Manitoulin	1,663		
Tehkummah	339		
NE Manitoulin & The Islands	2,319		
Assiginack	775		
TOTAL EAST MANITOULIN	5,096	2	2548
TOTAL MANITOULIN ORGANIZED	7,281	3	2427
TOTAL ORGANIZED	25,902	11	2355
UNORGANIZED			
Sudbury Unorganized	5,894		
Manitoulin Unorganized	181		
TOTAL UNORGANIZED	6,075	3	2025
TOTAL SUDBURY/MANITOULIN	31,977	14	2284
PROVINCIAL REPRESENTATIVE		1	
TOTAL REPRESENTATIVES		15	

Information Sources:

Organized population figures - 1998 Municipal Directory.

Unorganized population figures - 1996 Census (not incl. Reserves) and Municipal Information.

Where possible, populations adjusted for changes resulting from municipal restructuring.

APPENDIX B

STEERING COMMITTEE
for the
SUDBURY-MANITOULIN DISTRICT
SOCIAL SERVICES ADMINISTRATION BOARD

Sample Resolution for Member Municipalities

BE IT RESOLVED THAT _____
(Name of Member Municipality)

does support the recommendation of the Steering Committee for the Sudbury-Manitoulin District Social Services Administration Board for the representation model of fourteen members and one Provincial appointee for the Sudbury-Manitoulin District Social Services Administration Board.

APPENDIX C

STEERING COMMITTEE
for the
SUDBURY-MANITOULIN DISTRICT
SOCIAL SERVICES ADMINISTRATION BOARD

Members Available for Presentations

	Name	Municipality	Telephone Number
1.	Bonnie Clement	Township of Baldwin	869-0225
2.	Janet Whissell	Township of Baldwin	869-0225
3.	Jody Johnson	Townships of Casimir, Jennings & Appleby Townships of Cosby, Mason & Martland	898-2294
4.	Allan Pellow	Town of Chapleau	864-1330
5.	Alain Bouillon	Town of Chapleau	864-1330
6.	Bill Williamson	Township of Cockburn Island	842-3648
7.	Austin Clipperton	Township of Cockburn Island	844-2289
8.	Frank Gillis	Town of Espanola	869-2112
9.	Lucille Joyce	Town of Espanola	869-1541
10.	Merwyn Sheppard	Town of Espanola	869-1541
11.	Ruby Croft	Town of Gore Bay	282-2420
12.	Joyce Foster	Town of Gore Bay	282-2420
13.	Willy Leveillee	Township of Hagar Township of Ratter & Dunnet Township of Rutherford & George Island	967-2174
14.	Ken Ferguson	Town of Northeastern Manitoulin & the Islands	368-3500
15.	Ned Martin	Town of Northeastern Manitoulin & the Islands	368-3500
16.	Robert Deschene	Township of Nairn & Hyman	869-4232
17.	Ray Harding	Township of Nairn & Hyman	869-4232
18.	Leslie Gamble	Township of Sables-Spanish Rivers	865-2646